

PHOTOMETRIC TEST REPORT

DECOR PRO ROUND
ADJUSTABLE - TEXTURED WHITE
- 4002739

astro

DECOR PRO ROUND ADJUSTABLE -

astro

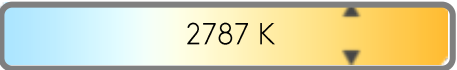
LIGHT EFFICIENCY:



LIGHT QUALITY:



COLOR TEMPERATURE:



OUTPUT: 1201 lm
PEAK: 6612 cd
POWER: 11.7 W
PF: 0.95



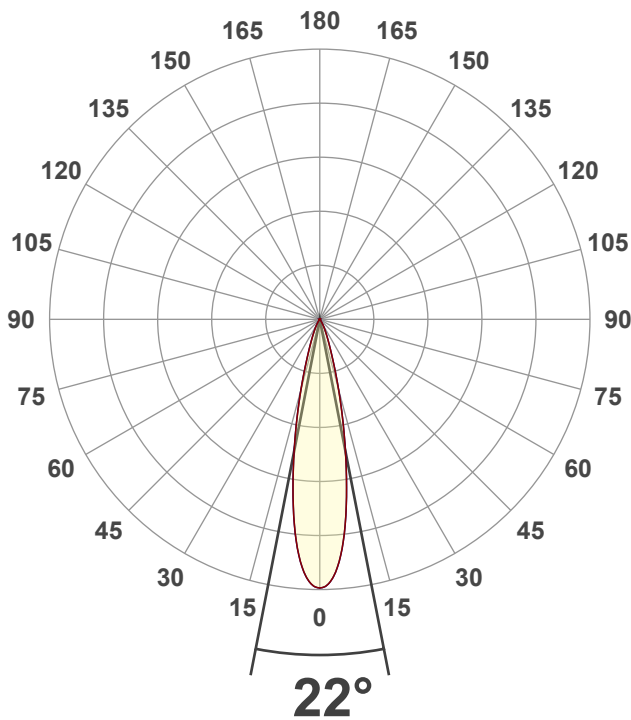
Tracking number: [n/a](#)

Product name:
Decor Pro Round Adjustable - Textured
White - 4002739

Item number:
DRA-TW-HE27G1-15G1-X-D1

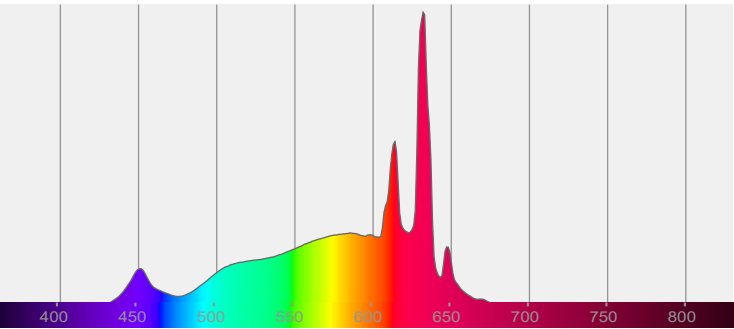
Date and time:
19/12/2024 12:41:55

Description:
IP20 LED Downlight

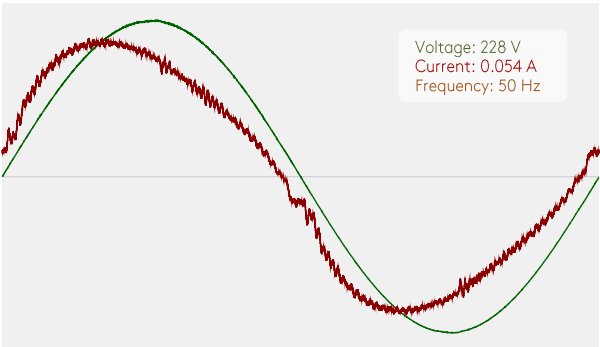


CIE 1931
x: 0.453
y: 0.410

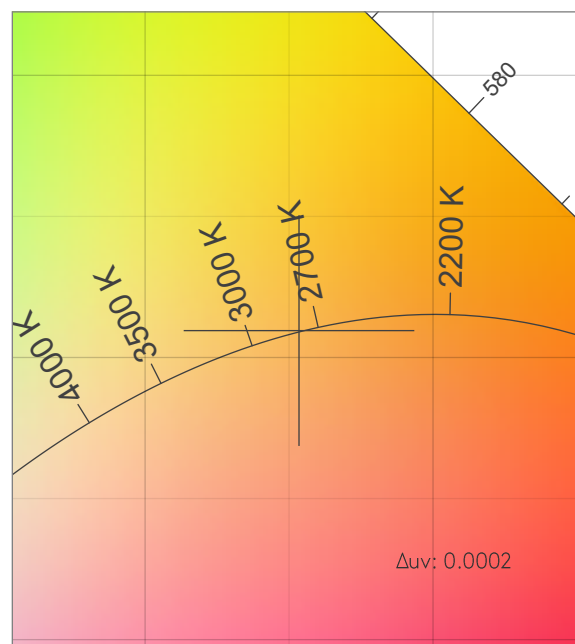
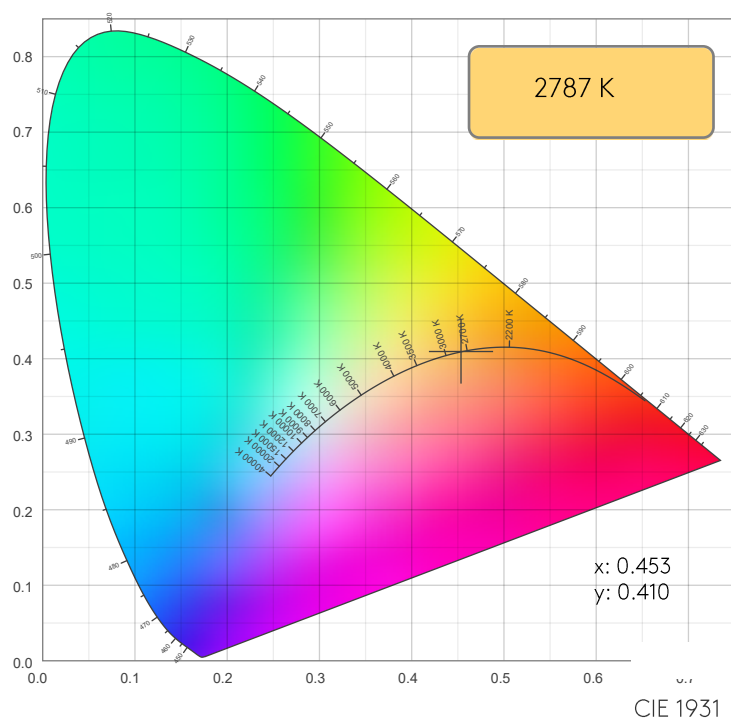
SPECTRA



POWER

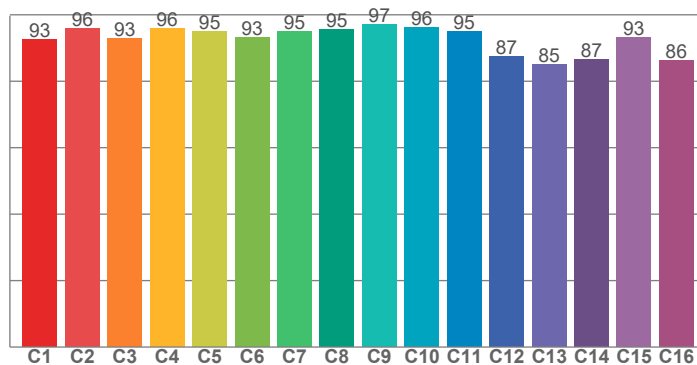


COLOR DETAILS

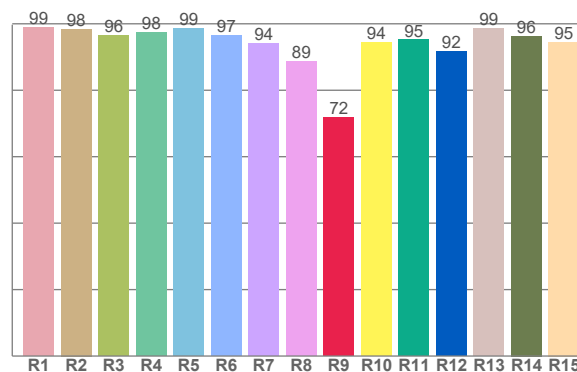


CIE 1931 ZOOM

TM30: 93.1



CRI: 96.2 (R1-R8)



CRI R values, only R1-R8 are used to calculate final CRI value

R1	R2	R3	R4	R5	R6	R7	R8	R9	R10	R11	R12	R13	R14	R15
99.0	98.4	96.4	97.5	98.6	96.6	94.1	88.6	71.9	94.4	95.2	91.6	98.5	96.3	94.5

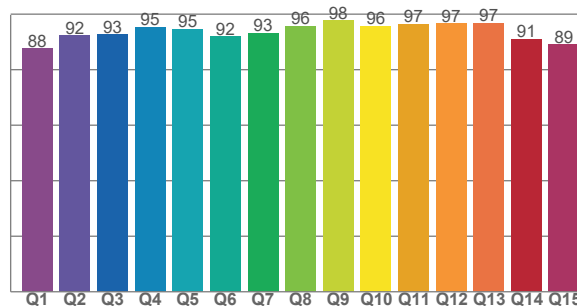
TM30 C values, 16 binned values out of total of 99 C values

C1	C2	C3	C4	C5	C6	C7	C8	C9	C10	C11	C12	C13	C14	C15	C16
92.6	95.9	93.0	95.8	95.0	93.0	95.0	95.5	97.0	96.1	94.9	87.5	85.0	86.6	93.2	86.2

CQS Q values

Q1	Q2	Q3	Q4	Q5	Q6	Q7	Q8	Q9	Q10	Q11	Q12	Q13	Q14	Q15
87.7	92.4	92.8	95.3	94.7	92.0	93.2	95.8	97.8	95.8	96.5	96.7	96.9	91.1	89.1

CQS: 92.9



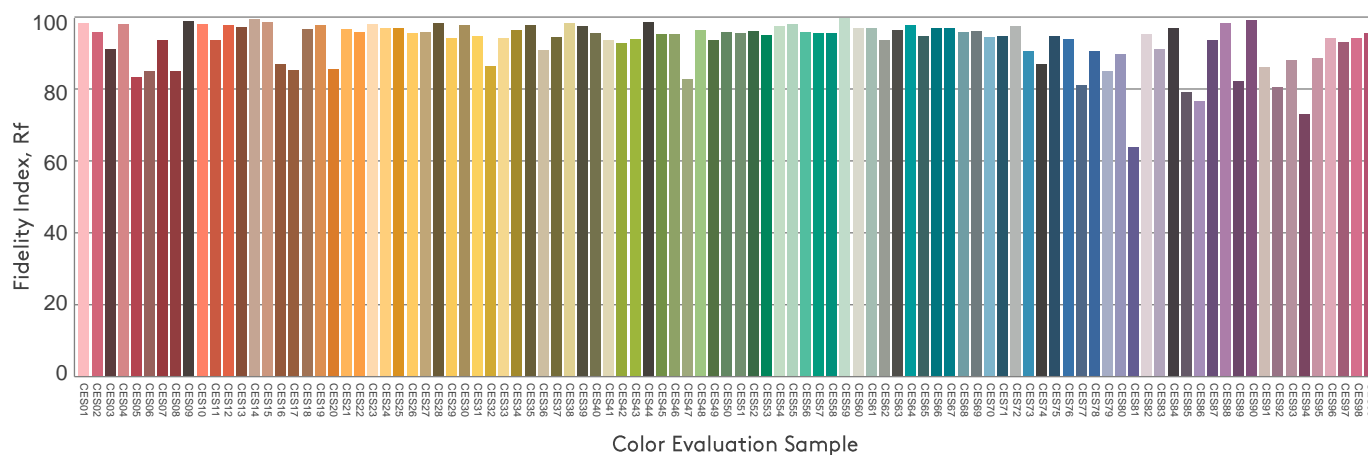
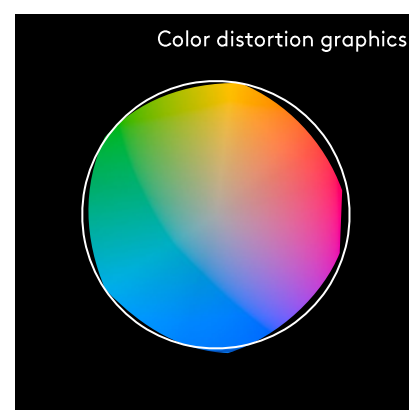
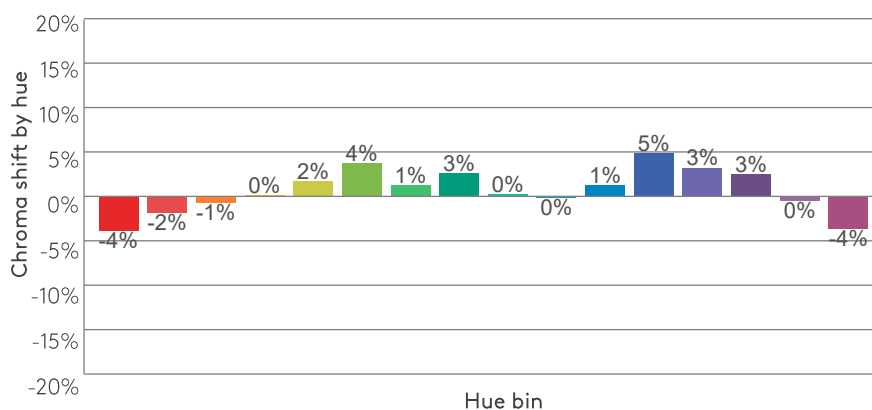
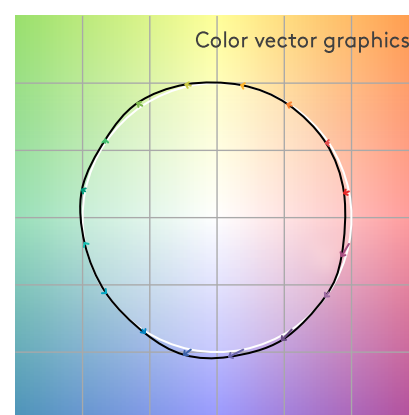
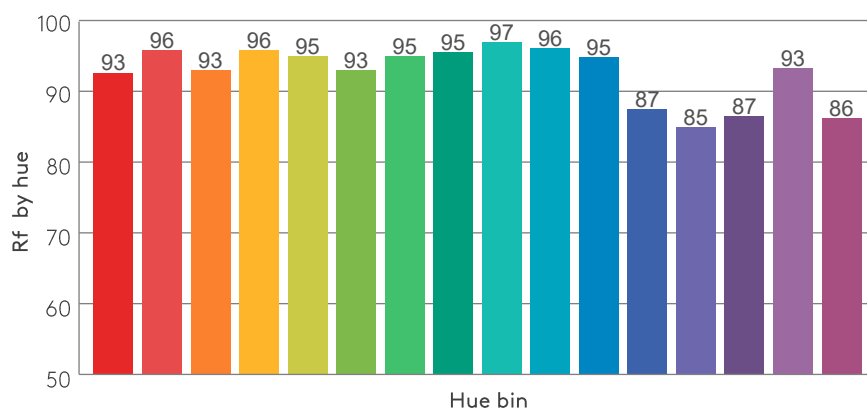
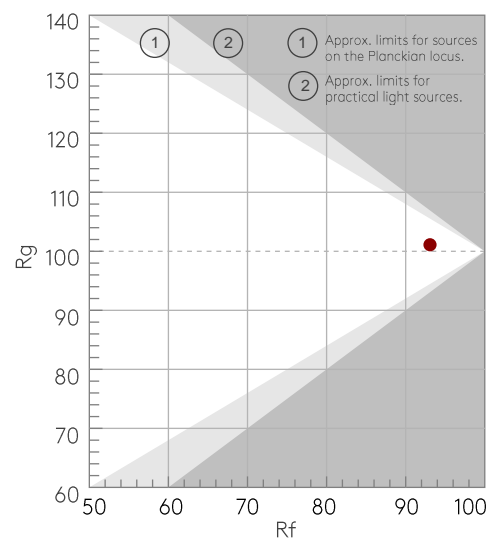
COLOR PARAMETERS

Color temperature	Color rendering index	Red component	Color fidelity	Color gamut	Color quality scale	Color coordinate cie 1931	Color coordinate cie 1931	Color coordinate	Color coordinate	Color deviation from black body
CCT	CRI	CRI R9	TM30 Rf	TM30 Rg	CQS	x	y	u	v	Δuv
2787 K	96.2	71.9	93.1	101.1	92.9	0.453	0.410	0.259	0.351	0.0002

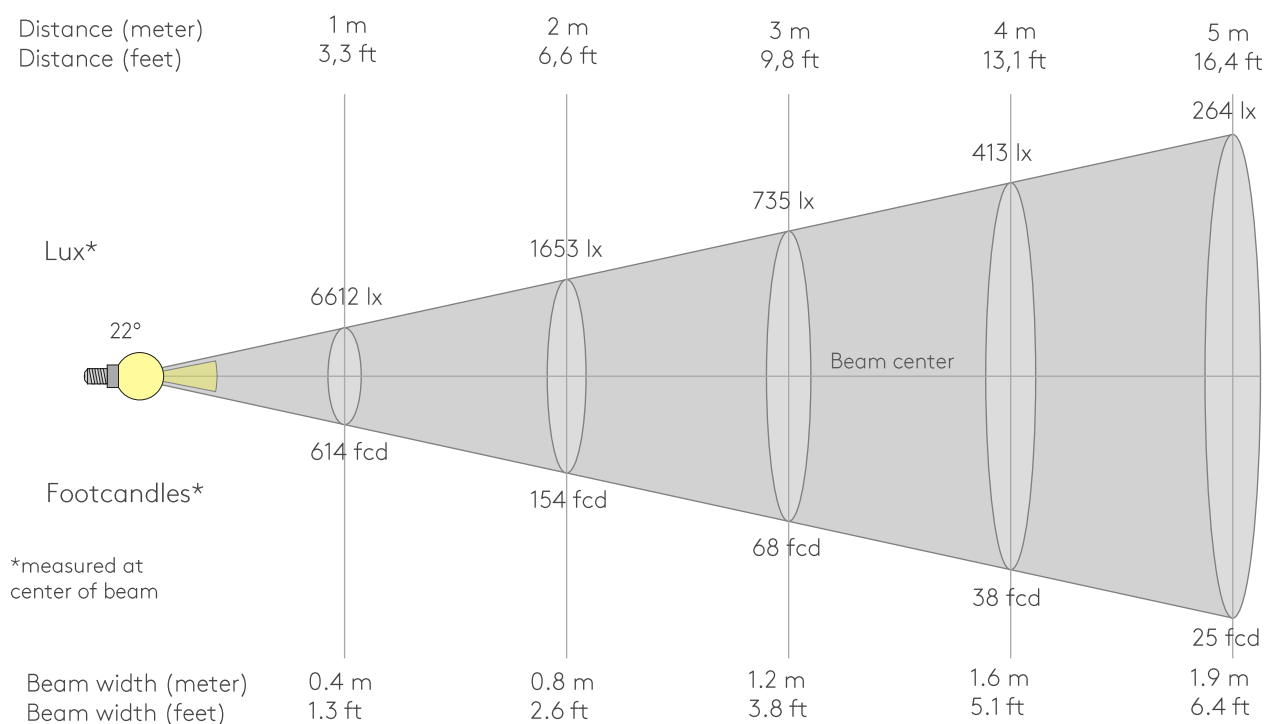
Rf 93.1
Fidelity index Rf

Rg 101.1
Gammut index Rg

Hue Bin	Rf	Graphic shifts (%)	
		Chroma	Hue
1	93	-4%	-1%
2	96	-2%	1%
3	93	-1%	3%
4	96	0%	2%
5	95	2%	4%
6	93	4%	2%
7	95	1%	-2%
8	95	3%	-1%
9	97	0%	-1%
10	96	0%	1%
11	95	1%	3%
12	87	5%	-4%
13	85	3%	-11%
14	87	3%	-10%
15	93	0%	-4%
16	86	-4%	-10%



BEAM DETAILS



Beam intensities from 1-20m

1m	2m	3m	4m	5m	6m	7m	8m	9m	10m	11m	12m	13m	14m	15m	16m	17m	18m	19m	20m
3.3ft	6.6ft	9.8ft	13.1ft	16.4ft	19.7ft	23ft	26.2ft	29.5ft	32.8ft	36.1ft	39.4ft	42.7ft	45.9ft	49.2ft	52.5ft	55.8ft	59.1ft	62.3ft	65.6ft
6612lx	1653lx	735lx	413lx	264lx	184lx	135lx	103lx	82lx	66lx	55lx	46lx	39lx	34lx	29lx	26lx	23lx	20lx	18lx	17lx
614.3fcd	153.6fcd	68.3fcd	38.4fcd	24.6fcd	17.1fcd	12.5fcd	9.6fcd	7.6fcd	6.1fcd	5.1fcd	4.3fcd	3.6fcd	3.1fcd	2.7fcd	2.4fcd	2.1fcd	1.9fcd	1.7fcd	1.5fcd

Intensities in 0° c-plane

0°	2°	4°	6°	8°	10°	12°	14°	16°	18°	20°	22°	24°	26°	28°	30°	32°	34°	36°	38°
6612	6499	6133	5510	4675	3754	2886	2121	1489	1021	722	523	382	281	207	149	104	71	47	31
100%	98%	93%	83%	71%	57%	44%	32%	23%	15%	11%	8%	6%	4%	3%	2%	2%	1%	1%	0%

Intensities in 90° c-plane

0°	2°	4°	6°	8°	10°	12°	14°	16°	18°	20°	22°	24°	26°	28°	30°	32°	34°	36°	38°
6612	6499	6133	5510	4675	3754	2886	2121	1489	1021	722	523	382	281	207	149	104	71	47	31
100%	98%	93%	83%	71%	57%	44%	32%	23%	15%	11%	8%	6%	4%	3%	2%	2%	1%	1%	0%

Intensities in 180° c-plane

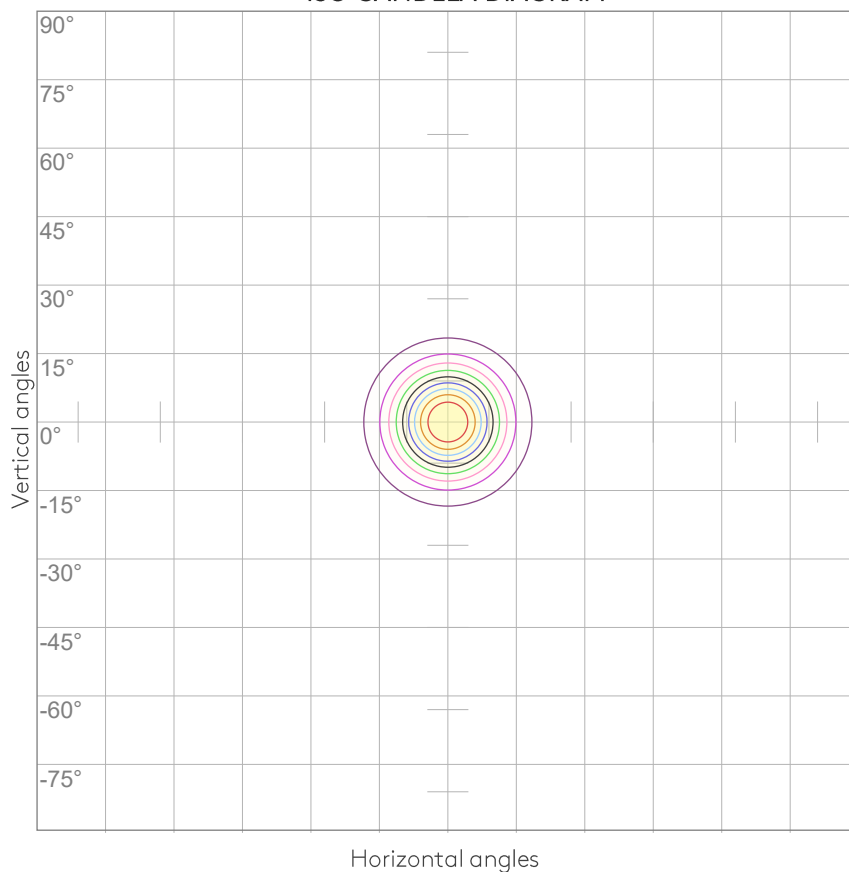
0°	2°	4°	6°	8°	10°	12°	14°	16°	18°	20°	22°	24°	26°	28°	30°	32°	34°	36°	38°
6612	6499	6133	5510	4675	3754	2886	2121	1489	1021	722	523	382	281	207	149	104	71	47	31
100%	98%	93%	83%	71%	57%	44%	32%	23%	15%	11%	8%	6%	4%	3%	2%	2%	1%	1%	0%

Intensities in 270° c-plane

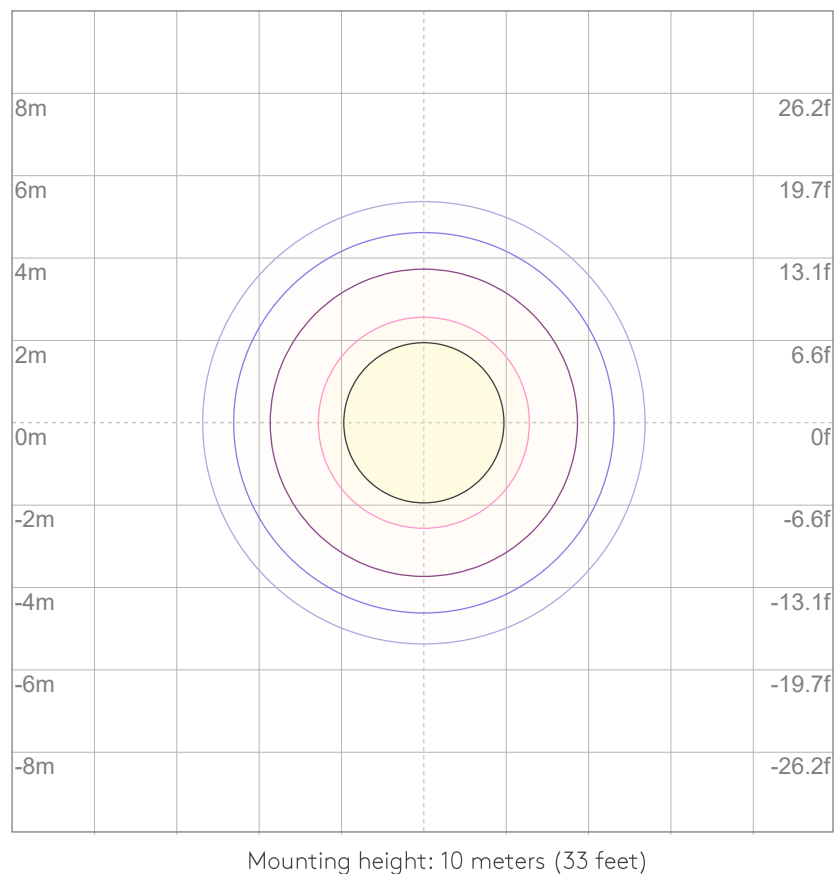
0°	2°	4°	6°	8°	10°	12°	14°	16°	18°	20°	22°	24°	26°	28°	30°	32°	34°	36°	38°
6612	6499	6133	5510	4675	3754	2886	2121	1489	1021	722	523	382	281	207	149	104	71	47	31
100%	98%	93%	83%	71%	57%	44%	32%	23%	15%	11%	8%	6%	4%	3%	2%	2%	1%	1%	0%

Beam angle 50%	Field angle 10%	Cutoff angle 2,5%	Intensity ratio in 120° cone	Intensity ratio in 90° cone
22°	41.1°	58.8°	99.8%	99.6%

ISO CANDELA DIAGRAM



ISO LUX DIAGRAM



UGR

GLARE EVALUATION ACCORDING TO UGR

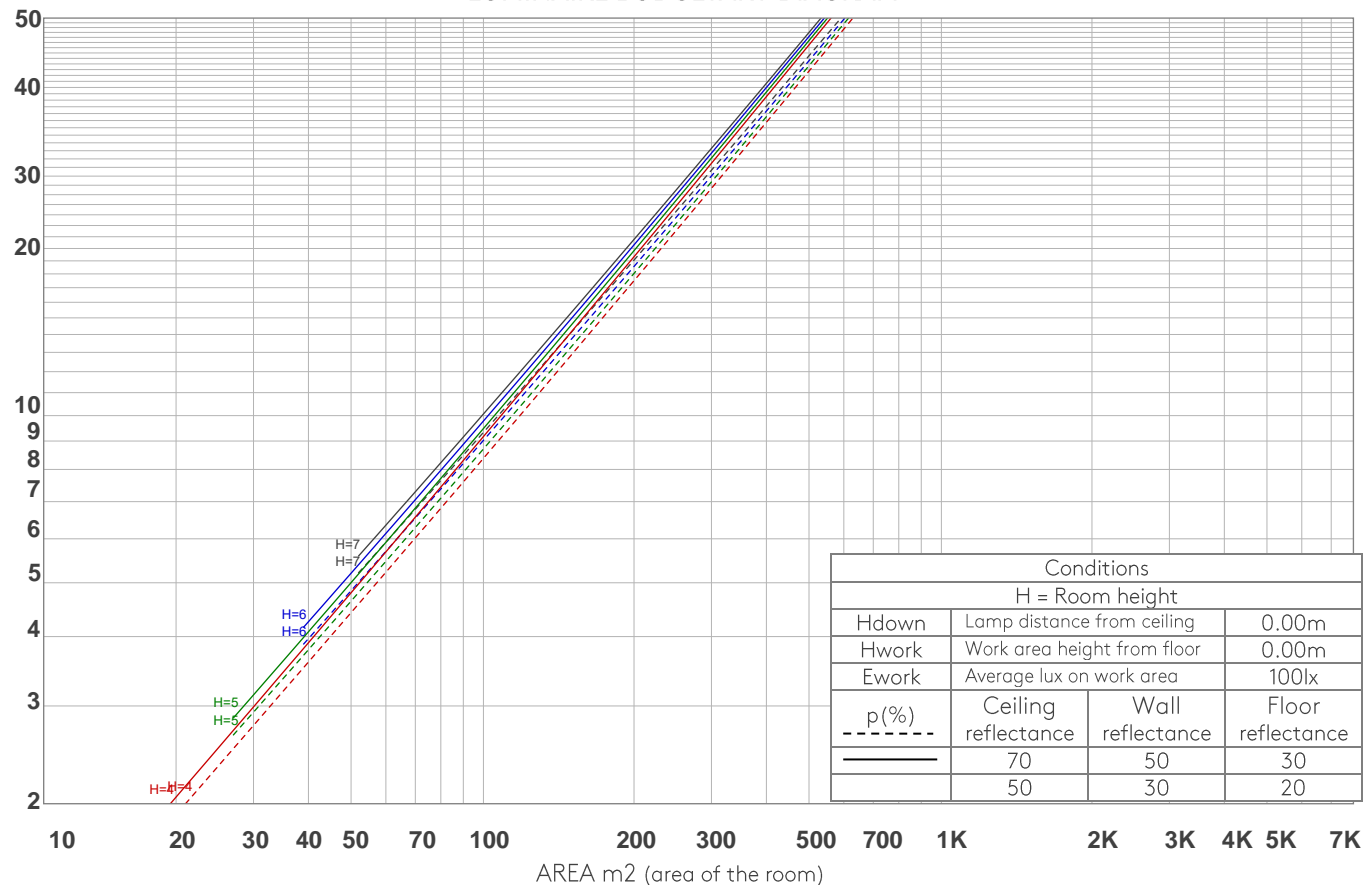
p Ceiling		70	70	50	50	30	70	70	50	50	30
p Walls		50	30	50	30	30	50	30	50	30	30
p Floor		20	20	20	20	20	20	20	20	20	20
Room size X Y		Viewing direction at right angles to lamp axis					Viewing direction parallel to lamp axis				
2H	2H	11.3	11.7	11.4	11.9	12.1	11.3	11.7	11.4	11.9	12.1
	3H	11.0	11.5	11.4	11.7	11.9	11.0	11.5	11.4	11.7	11.9
	4H	10.9	11.5	11.3	11.7	11.9	10.9	11.5	11.3	11.7	11.9
	6H	10.9	11.3	11.2	11.6	12.0	10.9	11.3	11.2	11.6	12.0
	8H	10.9	11.3	11.2	11.6	12.0	10.9	11.3	11.2	11.6	12.0
	12H	10.8	11.2	11.2	11.6	12.0	10.8	11.2	11.2	11.6	12.0
4H	2H	10.9	11.5	11.3	11.7	11.9	10.9	11.5	11.3	11.7	11.9
	3H	10.8	11.2	11.2	11.6	12.0	10.8	11.2	11.2	11.6	12.0
	4H	10.7	11.0	11.1	11.5	12.0	10.7	11.0	11.1	11.5	12.0
	6H	10.6	11.0	11.1	11.3	11.7	10.6	11.0	11.1	11.3	11.7
	8H	10.5	10.9	11.0	11.3	11.6	10.5	10.9	11.0	11.3	11.6
	12H	10.5	10.8	11.0	11.2	11.6	10.5	10.8	11.0	11.2	11.6
8H	4H	10.5	10.9	11.0	11.3	11.6	10.5	10.9	11.0	11.3	11.6
	6H	10.4	10.7	11.0	11.2	11.7	10.4	10.7	11.0	11.2	11.7
	8H	10.5	10.6	11.0	11.2	11.8	10.5	10.6	11.0	11.2	11.8
	12H	10.4	10.5	11.0	11.1	11.7	10.4	10.5	11.0	11.1	11.7
12H	4H	10.4	10.8	10.9	11.2	11.6	10.4	10.8	10.9	11.2	11.6
	6H	10.4	10.6	11.0	11.2	11.8	10.4	10.6	11.0	11.2	11.8
	8H	10.4	10.5	11.0	11.0	11.6	10.4	10.5	11.0	11.0	11.6
Variation of the observer position for the luminaire distance S											
S = 1.0H		6.2 / -13.3					6.2 / -13.3				
S = 1.5H		8.9 / -15.0					8.9 / -15.0				
S = 2.0H		10.9 / -15.6					10.9 / -15.6				
Standard table		n/a					n/a				
Correction summand		n/a					n/a				
Corrected glare indices referring to 1201 lm total luminous flux											

COEFFICIENTS OF UTILIZATION

Ceiling reflectance	80				70				50			30			10			0
Wall reflectance	70	50	30	10	70	50	30	10	50	30	10	50	30	10	50	30	10	0
Floor reflectance	20	20	20	20	20	20	20	20	20	20	20	20	20	20	20	20	20	0
RCR	(RCR: Room Cavity Ratio) Room Values are expressed as percentage of Lumens delivered to the task surface																	
0	119	119	119	119	116	116	116	116	111	111	111	106	106	106	102	102	102	100
1	115	113	111	110	113	111	109	108	107	106	105	103	102	101	100	99	99	97
2	112	108	105	103	110	106	104	102	103	101	99	100	99	97	98	97	95	94
3	108	104	100	98	106	103	99	97	100	97	95	98	96	94	96	94	92	91
4	105	100	96	93	104	99	96	93	97	94	92	95	93	91	93	91	90	89
5	102	97	93	90	101	96	92	89	94	91	89	93	90	88	91	89	87	86
6	100	94	90	87	98	93	89	87	92	88	86	90	88	85	89	87	85	84
7	97	91	87	84	96	90	87	84	89	86	84	88	85	83	87	85	83	82
8	95	88	84	82	94	88	84	82	87	84	81	86	83	81	85	83	81	80
9	92	86	82	80	91	86	82	79	85	81	79	84	81	79	83	81	79	78
10	90	84	80	78	89	83	80	77	83	80	77	82	79	77	82	79	77	76

LAMPS (number of lamps)

LUMINAIRE BUDGETARY DIAGRAM



ZONAL LUMEN SUMMARY

0°-10°	10°-20°	20°-30°	30°-40°	40°-50°	50°-60°	60°-70°	70°-80°	80°-90°
488 lm	503 lm	160 lm	40.4 lm	5.26 lm	1.07 lm	0.202 lm	0.100 lm	0.116 lm
90°-100°	100°-110°	110°-120°	120°-130°	130°-140°	140°-150°	150°-160°	160°-170°	170°-180°
0.111 lm	0.093 lm	0.085 lm	0.108 lm	0.168 lm	0.339 lm	0.549 lm	0.458 lm	0.097 lm

FLICKER

FLICKER CURVE (COMPLETE SAMPLED)



FLICKER FRAME (FRAME OF ONE FLICKER



FLICKER FFT (FREQUENCY SCOPE OF FLICKER



FLICKER RESULTS:

Flicker frequency:	n/a Hz
Flicker index:	n/a
Flicker percentage:	n/a %
SVM: (Visual flicker)	n/a

FLICKER CONDITIONS:

Sample rate:	n/a samples/second
--------------	--------------------